



metalloid1
PERFORMANCE PRODUCTS

www.metalloidone.com



**METALLOID1 PERFORMANCE PRODUCTS
BELIEVES IN GREAT PRODUCTS FOR ALL
YOUR NEEDS. IN THE OFFICE, IN THE SHOP
OR EVEN ON THE TRACK, WE HAVE THE
PRODUCTS FOR YOU.**

INDEX

	PAGE
 OFFICE PRODUCTS	4-5
 AUTOMOTIVE PRODUCTS	6-8
 INDUSTRIAL MAINTENANCE PROUDCTS	9-13
 INDUSTRIAL GREASES	14
 INDUSTRIAL CLEANING PROUDCTS	15
 INDUSTRIAL PROUDCTS	16-19
 MEDIA AND CLEANER PRODUCTS	20-21
 EQUIPMENT PRODUCTS	22-23
 COOLANT RECYCLING PROGRAM	24
 FOOD SERVICE PRODUCTS	25
 FIREARMS AND SPORTS CLEANERS	26

SMALL PACKAGING OFFICE PRODUCTS



OCEAN BREEZE

This air freshener and deodorizer is specially formulated to eliminate tough odors, such as tobacco smoke, vomit, and urine, that can persist even after the source of the odor has been removed. Freshen your space with the refreshing scent of Ocean Breeze.

Size: 20 oz can Net Weight: 10 oz Units/Pack: 12 cans



SPRING MIST

This air freshener and deodorizer is a specially formulated malodor counteractant that eliminates the toughest odors such as tobacco smoke, vomit or urine odors that linger even after the source of malodor has been removed. Freshen your space with the scent of Spring Mist.

Size: 20 oz can Net Weight: 10 oz Units/Pack: 12 cans



MULTI-PURPOSE HAND SANITIZING WIPES

These wipes are industrial-strength yet gentle on the skin. Made from a fabric that's 200 times stronger than other wipes on the market, they provide outstanding cleaning performance. The material effectively removes dirt and grime without harming the skin or surfaces. These versatile wipes can be used for a variety of tough cleaning tasks, especially in situations where soap and water are not readily available. The citrus-scented formulation contains emollients and natural oils to prevent hands from cracking and drying out, and they leave no residue behind.

Wipe Count: 72 per tub Units/Pack: 6 tubs per case



SURFACE SANITIZING WIPES

This is a non-woven disposable cloth that contains a stable disinfectant and deodorant formulated with a low pH. It is designed for use on hard, non-porous surfaces where controlling cross-contamination is necessary.

**Note: This product may be used to pre-clean or decontaminate critical or semi-critical medical devices prior to sterilization or high-level disinfection. When used on food contact surfaces, it must be followed by a rinse with potable water.*

Wipe Count: 50 per tub Units/Pack: 6 tubs per case



ADVANCE BOTANICAL HAND CLEANER

Is a heavy-duty waterless or water-dilutable detergent for hand washing in the machine shop or any industrial facility. This hand cleaner is composed of coconut and other botanical (green) ingredients. This unique formulation provides high detergency and emollient properties in a mild gentle-to-use hand cleaner.

Size: 32 oz Bottle



METALLOID1 GEL ANTISEPTIC HANDWASH

It is a refreshing alcohol-based sanitizer that kills 99.9% of most illness-causing germs. Germs transferred by hand are the #1 reason people become ill. It is safe on your hands, and you may reapply as often as needed. It does not replace handwashing to remove heavy soils, but it is an important step in keeping hands germ-free. It reduces workplace and school absenteeism by as much as 20%. It leaves skin smooth and conditioned without a medicinal smell.

Size: 8 oz bottle Net Weight: 8 oz Units/Pack: 12 bottles

IF YOU DON'T SEE IT, ASK US!

SMALL PACKAGING OFFICE PRODUCTS



GERMICIDAL CLEANER

This product is a foaming cleaner and germicide. It is a water-based aerosol that combines butyl cleaners, surfactants, and emulsifiers with a quaternary germicide, making it effective for heavy-duty cleaning of all surfaces. It is safe to use on all bathroom surfaces and will not damage chrome or metal. This cleaner kills *Staphylococcus aureus*, *Pseudomonas aeruginosa*, *Salmonella enterica*, and herpes simplex types 1 and 2, while also controlling mold, mildew, and fungus.

Size: 20 oz can Net Weight: 18 oz Units/Pack: 12 cans



DISINFECTANT SPRAY

This disinfectant and deodorant effectively eliminates a wide range of pathogens, including tuberculosis (TB), *E. coli*, herpes simplex types 1 and 2, *Salmonella enterica*, *Staphylococcus aureus*, the Avian Influenza A virus (H5N1), methicillin-resistant *Staphylococcus aureus* (MRSA), the pandemic H1N1 influenza A virus from 2009, and more. It inactivates HIV (the AIDS virus) on pre-cleaned surfaces or objects that have been contaminated with blood or body fluids. The formula contains a powerful blend of phenolic germicides that not only control mildew but also deodorize areas with unpleasant odors.

Size: 20 oz can Net Weight: 16.5 oz Units/Pack: 12 cans



RUG AND UPHOLSTERY CLEANER

It is a water-based spot and stain remover. It contains degreasers and surfactants that rapidly clean all types of spots and stains without damaging carpet fabrics. It also contains an odor modifier that destroys noxious odors, leaving a pleasant fragrance. The upside-down valve is quick and easy to use while standing up.

Size: 16 oz can Net Weight: 15 oz Units/Pack: 12 cans



METKLEEN GLASS & WINDOW CLEANER

Dries quickly and leaves no streaks. Ideal for windows, mirrors, windshields, and other glass surfaces. Effectively dissolves dirt, grease, grit, and grime.

Size: 32 oz Spray Bottle



METKLEEN 2140

Heavy-duty all-purpose maintenance cleaner. The unique wetting properties enhance the detergency and soil penetration to remove the most heavily soiled surfaces.

Size: 32 oz Spray Bottle



IF YOU DON'T SEE IT, ASK US!

SMALL PACKAGING AUTOMOTIVE PRODUCTS



SHINE-ON

Cleans, shines, and protects plastic, leather, acrylic, plexiglass, Lexan, chrome, fiberglass, and paint. It dries quickly and buffs to a streak-free finish. Invisible protective coating protects surfaces and repels dirt, dust, fingerprints, smudges, and bugs. Resists scratching and marring of surfaces. Shine-On prevents cracking and fading. And hardening of vinyl surfaces. It cleans and polishes glass surfaces such as display cases and counters, tables, mirrors, and more. Repels water is odorless, prevents fogging, and is non-abrasive.

Size: 16 oz can Net Weight: 14 oz Units/Pack: 12 cans



REFRESH

This product is an active bacteria carpet and upholstery cleaner and odor eliminator specially designed for easy application on carpets and upholstery to eliminate organic odors. It effectively counteracts pet and body odors. The unique inverted valve provides easy application.

Size: 20 oz can Net Weight: 18 oz Units/Pack: 12 cans



CLEAR X

This clear coating provides a fast-drying, glossy water barrier that brightens and beautifies vinyl and plastic surfaces. However, it should be used with caution in silicone-sensitive environments.

Size: 20 oz can Net Weight: 11 oz Units/Pack: 12 cans



CRASH CLEAN

Heavy Duty Foam Degreaser delivers a strong spray that penetrates deep into grease, grime, and oil. Its ultra-dense, fast-acting foam starts working immediately and allows for extended contact time on soiled surfaces. Formulated with natural citrus and grease-dissolving agents, this degreaser provides exceptional cleaning power. It also features a refreshing citrus fragrance.

Size: 20 oz can Net Weight: 16 oz Units/Pack: 12 cans



ORANGE TITAN

It contains a natural orange oil solvent to quickly cut through tar, asphalt, and paint overspray. The biodegradable formula leaves a fresh orange fragrance.

Size: 16 oz can Net Weight: 12 oz Units/Pack: 12 cans



DE-ICE

De-Ice is a fast, effective way to thaw ice and frost from headlights, locks, doors, icy steps, equipment, and many other surfaces. It helps prevent fogging when applied to the inside of window surfaces. Once applied, it improves visibility by preventing ice buildup. It also improves the traction of wheels on extra-thin ice. If used in advance, it will prevent ice formation for hours.

Size: 16 oz bottle Net Weight: 12 oz Units/Pack: 12 cans

IF YOU DON'T SEE IT, ASK US!

SMALL PACKAGING AUTOMOTIVE PRODUCTS



TIRE SHINE

This product revitalizes dull, dry-looking tires, imparting a stunning, wet-looking shine that lasts through several washes. It enhances the appearance of new tires and rejuvenates older ones, giving them a deep, like-new luster. Application is simple—just spray it on and walk away; no buffing is necessary. The spray can be used from any angle, even upside down. TIRE SHINE helps tires maintain a rich black color for a longer time while preventing cracking, browning, and premature aging.

Size: 20 oz can Net Weight: 12 oz Units/Pack: 12 cans



BRAKE/PARTS CLEANER

An ultra-fast drying, no residue, cleaning solvent intended to degrease any non-painted metal surface. This heavy duty cleaning agent instantly removes oil, dirt build-up, varnish, sludge, grease and brake fluid. Contains no chlorinated solvents and is 50 state compliant. The powerful spray breaks through even the toughest deposits! Cleans and degreases engine parts, tools, equipment, farm equipment, carburetors and throttle bodies, brake and rotors or any other metal surface that needs degreasing FAST!

Size: 20 oz can Net Weight: 14 oz Units/Pack: 12 cans



METKLEEN 2140

Heavy-duty all-purpose maintenance cleaner with unique wetting properties that enhance detergency and soil penetration, effectively removing dirt from heavily soiled surfaces.

Size: 32 oz Spray Bottle



METKLEEN GLASS & WINDOW CLEANER

Fast-drying formula that leaves no streaks behind. Ideal for windows, mirrors, windshields, and other glass surfaces. Effectively dissolves dirt, grease, grit, and grime.

Size: 32 oz Spray Bottle



ARMOR PROTEC

Armor Protec delivers long-lasting high-gloss shine while enhancing the deep, rich look of your vehicle's interior surfaces. It will help prevent cracking, fading, discoloration and premature aging and enhances your vehicle's deep, rich look while adding shine. Renews & revitalizes vinyl, rubber and plastic. Gives that new car shine look.

Size: 32 oz Spray Bottle



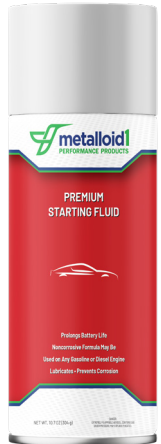
METCOR 57

Solvent-based corrosion preventative for long-term indoor protection of ferrous and non-ferrous metals. It is fast drying, water displacing, and non-staining. The deposited dry film "seals off" metal surfaces from moisture and humidity on contact. METCOR 57 is ideally suited to protect corrosive sensitive metals and alloys.

Size: 20 oz can Net Weight: 11 oz Units/Pack: 12 cans

IF YOU DON'T SEE IT, ASK US!

SMALL PACKAGING AUTOMOTIVE PRODUCTS



PREMIUM STARTING FLUID

Designed to aid gasoline and diesel engines with quick and easy starting power in cold, wet, or freezing weather while preventing excessive battery drain. Functions after use as a corrosion inhibitor and upper cylinder lubricant. Note: Do not use this product on glow plugs.

Size: 16 oz can Net Weight: 10.7 oz Units/Pack: 12 cans



CARBURETOR AND CHOKE CLEANER

Formulated for use on all carburetion and PCV systems in automobiles, buses, trucks, and industrial equipment. Cleans and frees choke linkages, moving parts on carburetors and PCV valves. It removes grease, carbon deposits, oil, gumming, and other materials. Fast drying, Leaves no film. Safe on oxygen sensors and catalytic converters.

Size: 16 oz can Net Weight: 13 oz Units/Pack: 12 cans



TIRE SOAP

This product is designed for mounting tires onto rims for passenger vehicles, construction equipment, or off-the-road (OTR) vehicles. It helps facilitate the mounting process for any type of wheel. The formulation is mild, ensuring safe lubrication for people, tires, and rims. It is economical, working effectively at ratios from 1:19 to 1:4 when mixed with water. Additionally, it contains antioxidants to prevent oxidation and rust formation.

Size: 32 oz Spray Bottle



COPPER LUBE

This is a copper-based anti-seize lubricant that works well in high temperatures and extreme pressures. It provides better ground conductivity than regular lubricants. It keeps moisture, gases, and corrosive fluids away from threaded connections. The copperMoly combination helps prevent seizing, galling, and premature wear. It also contains rust and corrosion inhibitors to extend the life of connectors. It can be used on threaded connections, piping, lamp sockets, bus bars, compression connectors, battery lugs and cables, fuse clips, grounding clamps, bolted connectors, fittings, taps, lugs, hydraulic hammers, and more.

Net Weight: 8 oz Units/Pack: 12 cans



IF YOU DON'T SEE IT, ASK US!

SMALL PACKAGING INDUSTRIAL MAINTENANCE PRODUCTS



RENEW RUST CONVERTER SPRAY

RENEW is a quick and convenient way to treat rusted surfaces. This product chemically converts the rust to an inert black polymer-based coating that prevents future rust from forming. Eliminates the need for brushing, sandblasting, or scraping before painting rusted surfaces. Once treated, the surface may be left unpainted or painted for improved appearance and protection. RENEW can be used on all rusted surfaces. Convenient spray can allow for quick, mess-free application. It combines a unique fast-drying carrier with special rust-converting agents and a sturdy polymeric coating. RUST CONVERTER: MIR: 1.1

Size: 20 oz can Net Weight: 13 oz Units/Pack: 12 cans



METCOR 57

Solvent-based corrosion preventative for long-term indoor protection of ferrous and non-ferrous metals. It is fast drying, water displacing, and non-staining. The deposited dry film "seals off" metal surfaces from moisture and humidity on contact. METCOR 57 is ideally suited to protect corrosive sensitive metals and alloys.

Size: 20 oz can Net Weight: 11 oz Units/Pack: 12 cans



METKLEEN 2480

METKLEEN 2480 is a rust-removing solution with a neutral pH that effectively removes oxidation from ferrous metals. Its neutral pH formula offers a less irritating and less aggressive method for oxidation removal. METKLEEN 2480 can be applied using a spray-and-wipe technique or in a heated recirculating immersion tank. METKLEEN 2480 is a neutral pH rust-removing solution that works quickly to remove oxidation on ferrous metals. Neutral pH provides a less irritating and less aggressive way to remove oxidation. METKLEEN 2480 is used in a spray and wipe-off application or a heated recirculating immersion tank.

Size: 32 oz Spray Bottle



METKLEEN 2090

METKLEEN 2090 COIL CLEANER is a low alkaline, aqueous spray wash cleaner for soft metals. The unique surfactant chemistry optimizes detergency and oil "split-out" from the cleaner bath for improved waste treatment. METKLEEN 2090 is aggressive against petroleum-based soils but is mild on sensitive metals and finishing equipment.

Size: 32 oz Spray Bottle



METKLEEN 2140

Heavy-duty all-purpose maintenance cleaner. The unique wetting properties enhance the detergency and soil penetration to remove the most heavily soiled surfaces.

Size: 32 oz Spray Bottle



METKLEEN GLASS & WINDOW CLEANER

Dries quickly and leaves no streaks. Ideal for windows, mirrors, windshields, and other glass surfaces. Effectively dissolves dirt, grease, grit, and grime.

Size: 32 oz Spray Bottle

IF YOU DON'T SEE IT, ASK US!

SMALL PACKAGING INDUSTRIAL MAINTENANCE PRODUCTS



BIOWELD ANTI SPATTER

This spatter inhibitor reduces downtime caused by spatter buildup and provides immediate shielding action. It does not affect the surfaces that need to be painted and is highly heat resistant. When applied as directed, this product is flowproof and will not spread beyond the point of impact. Highly heat resistant. Applied as directed, this spatter inhibitor is flowproof and will not spread beyond the point of impact.

Size: 20 oz can Net Weight: 16 oz Units/Pack: 12 cans



DRY GRAPHITE LUBRICANT

Metalloid1 Dry Graphite Lubricant contains molybdenum disulfide, graphite, and aluminum in a thick grease base. It helps eliminate the seizing of threaded parts at a temperature range from -35°F to 1200°F. It also helps cool hot bearings. It does not contain any chlorinated or fluorinated solvents. It is a versatile solution that offers superior, long-lasting performance in a variety of applications where petroleum products are not suitable. The dry coating resists dust and abrasive particles, while its resistance to water, oil, alkaloids, and most acids ensures it can meet a wide range of needs. This product forms a strong bond to metal and will not wipe off easily, making it a reliable choice for your needs. It can also be used as a release agent.

Size: 16 oz can Net Weight: 12 oz Units/Pack: 12 cans



MOLY CHAIN AND CABLE

Our product is expertly designed to provide maximum protection to wire ropes and chains of all types. It deeply penetrates the strands of wire ropes, ensuring the ultimate in lubrication. It doesn't accumulate on chains to attract dust or dirt, but instead provides comprehensive lubrication of rollers, pins, and bushings. With regular use, our product significantly reduces chain whip, vibration, and noise, creating a more comfortable and peaceful environment. It also shields against galling, seizing, and wear, thereby extending the life of chain cable and sprockets.

Size: 16 oz can Net Weight: 12.5 oz Units/Pack: 12 cans



LET LOOSE

LET LOOSE, a scientifically formulated penetrating oil and rust dissolver, is designed with your safety in mind. It contains PTFE and Moly micron-sized particles that act as millions of tiny ball bearings to prevent seizing and galling while parts are removed. This product is suitable for all dismantling jobs throughout the plant, shop, or wherever parts are frozen or hard to operate. It quickly loosens corroded nuts, studs, bolts, flanges, and pipe joints, without containing harmful solvents like silicone or chlorinated solvents.

Size: 16 oz can Net Weight: 11 oz Units/Pack: 12 cans



ANTI-SEIZE COMPOUND

Metalloid1 Anti-Seize Compound is formulated with molybdenum disulfide, graphite, and aluminum in a thick grease base. It effectively prevents the seizing of threaded components. The product operates within a temperature range of -35°F to 1200°F and aids in cooling hot bearings. Additionally, it does not contain any chlorinated or fluorinated solvents. It helps eliminate the seizing of threaded parts. Temperature range from -35°F to 1200°F. Helps cool hot bearings. Does not contain any chlorinated or fluorinated solvents.

Size: 16 oz can Net Weight: 13 oz Units/Pack: 12 cans



PENNY LUBE

A copper-based anti-seize lubricant formulated to withstand high temperatures and extreme pressures. This is a copper-based anti-seize lubricant designed to endure high temperatures and extreme pressures. It maintains better ground conductivity compared to standard lubricants. The formula effectively seals out moisture, gases, and corrosive fluids from threaded connections. The copper-molybdenum combination prevents seizing, galling, and premature wear. Additionally, it contains rust and corrosion inhibitors to ensure the long life of connectors. Continues ground conductivity better than ordinary lubricants.

Size: 16 oz can Net Weight: 12 oz Units/Pack: 12 cans

IF YOU DON'T SEE IT, ASK US!

SMALL PACKAGING INDUSTRIAL MAINTENANCE PRODUCTS



GRAFFITI REMOVER

Metalloid1 GRAFFITI REMOVER is an extra heavy-duty cleaner that effectively removes all types of ink without damaging any surfaces. This unique gel formula adheres well to clean vertical and irregular shapes.

Size: 20 oz can Net Weight: 15 oz Units/Pack: 12 cans



SILICONE SPRAY

Metalloid1 Silicone Spray is a versatile, multi-purpose silicone spray designed for various applications. This non-flammable formula is safe for use in all areas of the plant. Our formulation features a high-viscosity silicone that provides long-lasting lubrication and protection. It is non-conductive up to 28,000 volts and can withstand stable temperatures of up to 400°F.

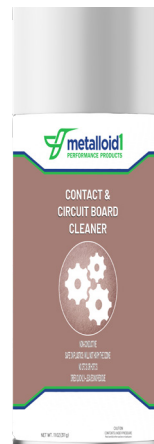
Size: 16 oz can Net Weight: 15 oz Units/Pack: 12 cans



PENETRATING OIL LUBRICANT

Metalloid1 Penetrating Oil Lubricant is a non-flammable, 4-in-1 formula that penetrates, lubricates, displaces moisture, and resists corrosion. This high-quality oil is fortified with PTFE and contains no ozone depleters, ensuring that it's safe and effective. Plus, it conforms to Military Specifications MIL-C-23411 for corrosion prevention, so you can be confident that you're getting a top-notch product.

Size: 20 oz can Net Weight: 19 oz Units/Pack: 12 cans



CONTACT & CIRCUIT BOARD CLEANER

This product is an effective, fast-drying, and non-conductive solvent safe for metal surfaces. It removes oil, grease, dirt, and grime from circuit boards, computers, magnetic tapes, printed circuits, gauges, switches, and relays. It is free of CFCs and HCFCs, making it ozone-safe.

Size: 16 oz can Net Weight: 10 oz Units/Pack: 12 cans



ELECTRONIC CLEANER

Metalloid1 ELECTRONIC CLEANER is a safe choice for cleaning energized electrical equipment. It's non-flammable and non-conductive, making it suitable for use on metal parts, electric motors, and electronic subassemblies. It quickly cleans oil, grease, and dirt without leaving residue. With a Dielectric strength of 29,000 volts and containing no 1,1,1 Trichloroethane, it can even be used while equipment runs. However, it's important to note that the product must be tested before use on any plastic.

Size: 20 oz can Net Weight: 18 oz Units/Pack: 12 cans



AIR LINE LUBRICANT

Metalloid's Air-Line Lubricant is a high-quality white oil that offers excellent resistance to oxidation. This lubricant features remarkable anti-wear and friction-modifying properties that are superior to those of traditional oil-based lubricants. Additionally, Air-Line Lubricant demonstrates good moisture tolerance and helps prevent the formation of acidic byproducts, significantly reducing the risk of oxidation.

IF YOU DON'T SEE IT, ASK US!

SMALL PACKAGING INDUSTRIAL MAINTENANCE PRODUCTS



ADVANCE BOTANICAL HAND CLEANER

Heavy-duty waterless or water-dilutable detergent for hand washing in the machine shop or any industrial facility. This hand cleaner is composed of coconut and other botanical (green) ingredients. This unique formulation provides high detergency and emollient properties in a mild gentle-to-use hand cleaner.

Size: 32 oz Bottle



METALLOID1 GEL ANTISEPTIC HANDWASH

It is a refreshing alcohol-based sanitizer that kills 99.9% of most illness-causing germs. Germs transferred by hand are the #1 reason people become ill. It is safe on your hands, and you may reapply as often as needed. It does not replace handwashing to remove heavy soils, but it is an important step in keeping hands germ-free. It reduces workplace and school absenteeism by as much as 20%. It leaves skin smooth and conditioned without a medicinal smell.

Size: 10 oz bottle Net Weight: 8 oz Units/Pack: 12 cans



ACCROLUBE GREASE

Accrolube High-Temperature Polyurea with PTFE creates a boundary lubrication film that reduces wear between metal surfaces and protects against corrosion. Accrolube High-Temperature Polyurea with PTFE deposits a fine protective and lubricating film on the metal that will continue to function even after the grease has extruded away. Microparticles of PTFE suspended in Accrolube High-Temperature Polyurea with PTFE ensure continued performance on equipment operating at high loads and extreme temperatures.

Size: 5cc, 1.5 oz, 14 oz, 1 lb, 5 lb, 7 lbs, 35 lb, Drum, 120 lb Keg



INDUSTRIAL WHITE GREASE

A food-grade white grease is a high-purity, complex grease with exceptional metal-to-metal characteristics. It is ideal for heavy-duty applications that require extended grease life. This grease resists both water and heat, offering protection against rust and corrosion while providing superior lubrication for a variety of uses. It operates effectively within a wide temperature range of -40°F to +550°F.

Size: 16 oz can Net Weight: 10 oz Units/Pack: 12 cans



INVADE

A non-flammable powerful, multiple-action penetrant and protective shield. Can be used on either dry or wet surfaces. To ensure adequate protection, periodic checks should be made to determine the need for reapplication.

Size: 16 oz can Net Weight: 10 oz Units/Pack: 12 cans



METKLEEN 2140 BULK

Is a heavy-duty all-purpose maintenance cleaner. The unique wetting properties enhance the detergency and soil penetration to remove the most heavily soiled surfaces.

Size: Quarts, Gallons & Drums

IF YOU DON'T SEE IT, ASK US!

SMALL PACKAGING INDUSTRIAL MAINTENANCE PRODUCTS



MET WAY OILS

MET WAY oils are low sulfur, low acid way lubricant that resists emulsification and provides superior coolant compatibility.

T WAY	32	46	68	100	150	220
Gravity	31.4	31.7	29.2	30.3	28.0	27.0
cosity @100 °F, SUS	160	238	340	516	730	1100
cosity @ 210 °F, SUS	43.5	49.4	55	65.3	75	94
cosity @ 40 °C, cSt	32	46.2	67	99.2	138	210
cosity @ 100 °C, cSt	5.3	6.90	8.5	11.4	13.8	18.2
cosity Index	105	105	102	101	95	95
ir Point, °F	-10	-10	-10	-10	0	10
sh Point, °F	410	445	445	445	475	485
incinnati Milacron Grade	P-53	N/A	P-47	N/A	N/A	P-50

Size: Quarts, Gallons & Drums



MET HYDRAULIC OILS

Met Hydraulic oils surpass the antiwear requirements of all hydraulic pump manufacturers, and in laboratory testing, they can extend piston, vane, and gear pump life beyond that provided by conventional hydraulic oils. They are also more water tolerant than most commodity hydraulic fluids.

Met Hydraulic AW	22	32	46	68	100	150	220	320	460
API Gravity	33.7	32.8	31.7	30.9	30.3	29.2	28.2	27.1	24.3
Viscosity 100° F SUS	105	156	238	350	516	774	1147	1684	2425
Viscosity 210° F SUS	39.8	44.0	49.4	55.5	65.3	79.7	98.9	124.6	148.0
Viscosity 40° C cSt	20.4	30.3	46.2	67.6	99.2	148	218	318	454
Viscosity 100° C cSt	4.13	5.26	6.90	8.71	11.4	15.0	19.5	25.2	30.5
Pour Point °F	-10	-10	-10	-10	-10	5	5	10	10
Flash Point °F	375	410	445	445	445	475	485	485	580
Viscosity Index	102	105	105	102	101	102	102	102	95
Cincinnati Milacron	-	P-68	P-70	P-69	-	-	-	-	-

Size: Quarts, Gallons & Drums



METCOAT 10

A heavy-duty, anti-wear lubricant designed specifically for use on conveyors and other plant maintenance equipment. It was developed to be a dry film lubricant that penetrates and cleans to remove carbonaceous residues and help dissolve solidified grease. A thin film of highly stable Lubricating Solids is carried to the contact points that offers superior film strength and wear protection.

Size: Quarts, Gallons & Drums



MET GEAR OILS

MET GEAR oils are high-performance industrial gear lubricants that are designed to fulfill the requirements of enclosed, circulating, or splash gear lube applications. They are formulated from high-quality mineral base stocks combined with extreme pressure (EP) and, noncorrosive advanced additives to protect gears, bearings, and seals.

MET GEAR	32	46	68	100	150	220	320	460
PI Gravity	32.8	31.7	30.9	30.3	29.2	28.2	27.1	24.3
iscosity 100° F SUS	156	238	350	516	774	1147	1684	2425
iscosity 210° F SUS	44.0	49.4	55.5	65.3	79.7	98.9	124.6	148.0
iscosity 40° C cSt	30.3	46.2	67.6	99.2	148	218	318	454
iscosity 100° C cSt	5.26	6.90	8.71	11.4	15.0	19.5	25.2	30.5
our Point °F	5	10	10	15	15	20	20	20
ash Point °F	410	445	445	445	475	485	485	580
GMA Grade	-	1EP	2EP	3EP	4EP	5EP	6EP	7EP
ZG Load Stage	12	12	12	12	12	12	12	12

Size: Quarts, Gallons & Drums



MET SPINDLE OILS

Met Spindle oils are high-quality spindle bearing oils developed for the lubrication of high-speed spindle bearings in machine tools. The oils are formulated with anti-wear and EP properties to provide excellent lubricity and wear protection. The oils provide rust prevention and protection, excellent oxidation resistance and thermal stability.

Grade	2	6	10	22
pecific Gravity @ 70° F	0.785	0.822	0.845	0.85
ensity #/gal	6.54	6.84	7.04	7.08
cosity cSt @ 100° F	2.4	5.8	9.7	21.2
cosity SUS @ 100° F	34.0	45.6	57.5	103

Size: Quarts, Gallons & Drums



VELVET GRIT SCRUB

A heavy-duty lotion type with grit, pleasantly scented with emollients to help prevent cracking and chapping. Available in drums or cases of 6 gal. per case, and 2 dispenser pumps. Wipe or rinse off.

Size: Quarts, Gallons & Drums

IF YOU DON'T SEE IT, ASK US!

SMALL PACKAGING INDUSTRIAL GREASES



ACCROLUBE GREASE

Accrolube High-Temperature Polyurea with PTFE creates a boundary lubrication film that reduces wear between metal surfaces and protects against corrosion. Accrolube High-Temperature Polyurea with PTFE deposits a fine protective and lubricating film on the metal that will continue to function even after the grease has extruded away. Microparticles of PTFE suspended in Accrolube High-Temperature Polyurea with PTFE ensure continued performance on equipment operating at high loads and extreme temperatures.

Size: 5cc, 1.5 oz, 14 oz, 1 lb, 5 lb, 7 lbs, 35 lb, Drum, 120 lb Keg



INDUSTRIAL WHITE GREASE

A food-grade white grease is a high-purity, complex grease with exceptional metal-to-metal characteristics. It is ideal for heavy-duty applications that require extended grease life. This grease resists both water and heat, offering protection against rust and corrosion while providing superior lubrication for a variety of uses. It operates effectively within a wide temperature range of -40°F to +550°F.

Size: 16 oz can **Net Weight:** 10 oz **Units/Pack:** 12 cans



IF YOU DON'T SEE IT, ASK US!

SMALL PACKAGING INDUSTRIAL PRODUCTS



ORANGE TITAN

It contains a natural orange oil solvent to quickly cut through tar, asphalt, and paint overspray. The biodegradable formula leaves a fresh orange fragrance.

Size: 16 oz can Net Weight: 12 oz Units/Pack: 12 cans



ORANGE CRAZY CLEAN

It is an all-purpose, heavy-duty citrus-based foaming cleaner. It combines emulsifiers, surfactants, and citrus cleaner to provide superior cleaning action on most surfaces. The high-density, clinging foam allows it to be used on vertical and irregular surfaces as well as horizontal surfaces, extending its usefulness.

Size: 20 oz can Net Weight: 18 oz Units/Pack: 12 cans



METKLEEN 2140

Heavy-duty all-purpose maintenance cleaner. The unique wetting properties enhance the detergency and soil penetration to remove the most heavily soiled surfaces.

Size: 32 oz Spray Bottle



PENETRATING COIL CLEANER

This product is designed to effectively penetrate and remove dirt and debris from condenser coils and fins, eliminating the need for high-pressure sprayers and bulky tank sprayers. Upon contact with the coil surface, the product's foaming action begins to dislodge the soil. No rinsing is required; dirt and lint are simply washed away with the condensation, leaving the unit clean and deodorized.

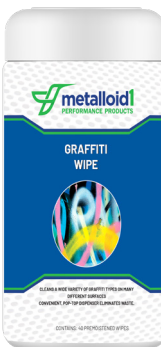
Size: 20 oz can Net Weight: 18 oz Units/Pack: 12 cans



GRAFFITI REMOVER

Metalloid1 GRAFFITI Remover is an extra heavy-duty cleaner that effectively removes all types of ink without damaging any surfaces. This unique gel formula adheres well to clean vertical and irregular shapes.

Size: 20 oz can Net Weight: 15 oz Units/Pack: 12 cans



GRAFFITI WIPE

This product effectively removes paint and graffiti in a single step. Its biodegradable formula features powerful cleaners that quickly tackle various types of graffiti. The fabric of the towels is designed with built-in scrubbing action to enhance the effectiveness of the formula. It can eliminate most paints, including tough enamels. Importantly, it does not contain methylene chloride or other harsh chemicals, making it safer to handle. The towels stay moist in the container until you're ready to use them.

Wipe Count: 40 per tub

Units/Pack: 6 tubs

IF YOU DON'T SEE IT, ASK US!

INDUSTRIAL PRODUCTS

Machining & Grinding Coolants

Renewable (Green)

ADVANCE 6030BP (Aerospace Approved)

A low foaming, high performance, botanical metalworking fluid for machining and grinding of ferrous and non-ferrous metals.

ADVANCE 6030C

A heavy-duty, high-performance, botanical metalworking fluid for machining and grinding of ferrous, non-ferrous metals and copper alloys.

ADVANCE 6000

A heavy-duty version of ADVANCE 6030C. The ideal choice to replace chlorinated soluble oils used to machine aluminum, especially small hole-tapping aluminum.

ADVANCE 7150

A light to medium-duty, high performance, botanical metalworking fluid for machining and grinding of ferrous, and non-ferrous metals.

Synthetic

METCHEM 6470

A medium/heavy-duty synthetic coolant chemically engineered to machine and grind ferrous and non-ferrous alloys.

METCHEM 6020

A bio-stable heavy-duty synthetic machining and grinding coolant for any alloy except for magnesium.

METCHEM 6960

A light synthetic machining and grinding coolant for all metals including cast iron.

METCHEM 6992 (Aerospace Approved)

A bio-stable, true solution, oil free, machining and grinding fluid.

METGRIND 656

A synthetic carbide grinding fluid developed to significantly reduce the leaching of cobalt in cutting tools, inserts, and dies.

Semi-Synthetic

SYNSOL 7000

A high-performance, heavy-duty, bio-stable, metalworking fluid for machining and grinding of ferrous and non-ferrous metals.

Soluble Oil

METSOL 9000

A high-performance, heavy-duty, bio-stable, water-soluble coolant for machining and grinding of ferrous and non-ferrous metals.

METSOL 9250

A high-performance, non-chlorinated, micro emulsion coolant for machining and grinding of ferrous metals.

METGRIND Precision Grinding Fluids

A series of high-performance grinding fluids formulated with highly-refined, pure petroleum and synthetic base stocks that deliver exceptional resistance to oxidation for superior stability and filterability.

METGRIND 8865

Specially formulated for carbide grinding.

METGRIND	15	22	32	46	68	8865
----------	----	----	----	----	----	------

API Gravity, 60° F	34.1	34.3	34.8	32.6	31.8	48.9
--------------------	------	------	------	------	------	------

Viscosity @ 40° C, cSt	15	23	31	44	67	3.5
------------------------	----	----	----	----	----	-----

Viscosity @ 100° F, SUS	78	108	155	220	340	38
-------------------------	----	-----	-----	-----	-----	----

Flash Point, °F	350	375	420	445	445	266
-----------------	-----	-----	-----	-----	-----	-----

SWISSKUT Swiss Machining Fluids

High-performance cutting and machining fluids formulated with renewable synthetic base stocks. These cutting fluids are operator friendly and safer due to the high flash point and reduced skin sensitivity. SWISS fluids provide exceptional resistance to oxidation for superior stability and fluid life.

SWISSKUT	8770	8772	8773
----------	------	------	------

API Gravity, 60° F	32.5	34.3	35.8
--------------------	------	------	------

Viscosity @ 40° C, cSt	11	22	31
------------------------	----	----	----

Viscosity @ 100° F, SUS	65	107	155
-------------------------	----	-----	-----

Flash Point °F	430	430	435
----------------	-----	-----	-----

Density, lbs/gal	7.19	7.45	7.61
------------------	------	------	------

EDM Fluids

METEDM 769

A high purity mineral oil electrical discharge machining fluid.

METEDM 8870

A clear, synthetic electrical discharge machining fluid with a high dielectric strength and oxidation resistance to give maximum performance and fluid life.

METEDM	769	8870
--------	-----	------

API Gravity, 60° F	49	48.9
--------------------	----	------

Viscosity @ 40° C, cSt	3	3.5
------------------------	---	-----

Viscosity @ 100° F, SUS	39	38
-------------------------	----	----

Flash Point °F	280	266
----------------	-----	-----

INDUSTRIAL PRODUCTS

Specialty Fluids

TAPEZE X-2

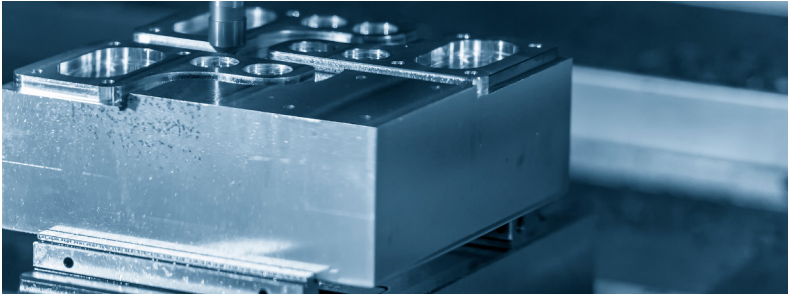
An EP fortified paste for tapping all metals.

TAPEZE X-3

A high-viscosity, EP fortified tapping and cutting fluid that is safe for all metals.

Threadwell

A multi-purpose EP fortified threading lubricant for ferrous metals for tough threading jobs.



Minimum Quantity Lubricants (MQL) Microlubricants

ML-33

A light to medium-duty minimal quantity lubricant for soft metals.

ML-300

A heavy-duty MQL for both steel and aluminum and it is the lubricant of choice for machining mixed metals.

ML-450

The ideal choice for medium-duty machining of steel and aluminum alloys.

ML-600

A light to medium-duty MQL for machining of soft metals.

ML-605

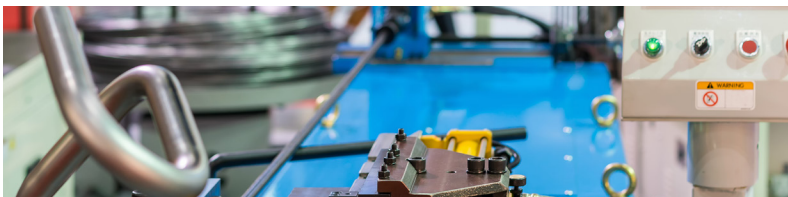
A heavy-duty MQL for bending stainless steel and aluminized tubes.

ML-700

A heavy-duty MQL lubricant for cutting and forming of all metals.

ML-725

A heavy-duty MQL that is the ideal choice for machining of mixed metals.



Metalforming and Tube Bending Fluids

Soluble Oil

METDRAW 880B

A medium to heavy-duty soluble oil for drawing and stamping.

METDRAW 51900

A heavy-duty soluble oil drawing and stamping fluid. It is a versatile product, designed for forming and drawing operations on difficult ferrous alloys.

Synthetic Fluids

METCHEM 6620 (Nissan approved)

A highly-concentrated, synthetic lubricant designed for heavy-duty metalforming operations on ferrous and non-ferrous metals.

METCHEM 6580

A botanical based lubricant for light to medium-duty applications on non-ferrous metals.

Renewable (Green)

ADVANCE 6124

A heavy-duty, biodegradable lubricant for all metals including hard alloys. This is a lighter version of ADVANCE 6120.

ADVANCE 6120

An ultra-heavy-duty, biodegradable lubricant with exceptional corrosion protection properties. Designed for the most severe of operations.

ADVANCE 6122ST

A heavy-duty, biodegradable lubricant that has excellent corrosion and stain protection for stacked parts.

ADVANCE 6110

An oil-free, biodegradable metalforming lubricant composed of renewable resources.

ADVANCE MF-127

Designed for metalforming operations for aluminum and steel. Ideal choice for end forming aluminum.

ADVANCE 6880

An ultra-heavy-duty, high-viscosity, biodegradable metalforming lubricant for severe operations.

Tube Bending

ADVANCE 6170

An environmentally friendly metalforming lubricant designed to bend fabricated stainless steel tubing for the HVAC, automotive, aerospace, and appliance industries.

METDRAW 5620

A metalforming lubricant designed to bend fabricated stainless steel tubing for the automotive and appliance industries where EP is needed.

METDRAW 51805 UHV

An oil-based tube bending lubricant developed to bend tough alloys without the use of halogenated materials or other environmentally impactful additives.

INDUSTRIAL PRODUCTS

Vanishing Oil

METDRAW 528

A low-viscosity, vanishing lubricant, for light-duty stamping and forming of ferrous and non-ferrous metals. MD528 is non-staining and leaves no residue on parts.

METDRAW 709

A versatile, light-viscosity, medium-duty, evaporative stamping lubricant.

METDRAW 711

A low-viscosity vanishing lubricant, containing a proprietary blend of lubricity additives.

Wiredrawing Lubricants

DRY "Soap Free" LUBRICANTS

WireWorks 10005 (Green)

Bull block or skin pass drawing of ferrous metals without dusting or caking. Directly annealable without post cleaning.

WireWorks 10027 (Green)

Exceptionally clean drawing of mixed metals at variable speeds. Directly annealable without post cleaning.

WireWorks 10073

Exceptionally clean, drawing in single-pass, skin pass and multi-die drawing. Directly annealable without post cleaning.

WET LUBRICANTS

ADVANCE 5270HV (Green)

Excellent for high-speed multi-die drawing of high carbon steels and exotic alloys.

METDRAW C-WD (Green)

Wet drawing of copper and aluminum. Exceptionally clean and biostable with long sump life.

WireWorks 50500

A biostable copper wire drawing lubricant composed of natural renewable resources.

Process and Maintenance Cleaners

Process Cleaners

METKLEEN 2080

A low-alkaline, all-purpose cleaner for all metals with high detergency and soil suspending properties, with built-in RP.

METKLEEN 2090

A low-alkaline, aqueous spray wash cleaner for soft metals.

METKLEEN 2120

A low-alkaline, aqueous hot-tank cleaner for soft metals with a unique surfactant chemistry that optimizes detergency and oil "split-out" from the cleaner bath for improved waste treatment.

METKLEEN 2150

A high-alkaline, heavy-duty spray wash aqueous cleaner for ferrous metals that require removal of difficult soils and/or oils at low temperatures. Ideal choice to replace solvent-based cleaners.

METKLEEN 2160

A low-temperature, general-purpose alkaline cleaner for ferrous and non-ferrous metals, formulated with an exceptional corrosion protection package.

METKLEEN 2200 (Acid Cleaner)

An acidic cleaner to clean, deoxidize, descale, de-rust, and remove corrosive deposits on ferrous and non-ferrous metals.

METKLEEN 2480

A neutral pH rust removing solution, which works quickly to remove oxidation on ferrous metals.

Powder Coat Prep

A truly unique product that will clean, degrease, and etch metal surfaces all in one step. An iron phosphate cleaner and conversion coating for use on ferrous, aluminum zinc, and stainless alloys.

INDUSTRIAL PRODUCTS

Maintenance Cleaners

METKLEEN 907

A low-foaming water-extendable metal cleaner for cleaning aluminum from punches.

METKLEEN 2140

A heavy-duty floor and all-purpose cleaner that cleans and deodorizes heavily soiled surfaces.

METKLEEN 2420

A heavy-duty sump cleaner and general maintenance cleaner to remove tough oils, greases, and shop soils.

METKLEEN 9 (Green)

A VOC Exempt, low pH, hard-surface cleaner to replace high-VOC cleaners in industrial cleaning processes. This "green" cleaner reduces surface tension and enhances rinsing properties.

Hand Washing

ADVANCE BOTANICAL HAND CLEANER

A heavy-duty waterless or water-dilutable cleanser for hand washing in the machine shop or any industrial facility.

Rust Preventatives

Renewable (Green)

METCOR 71

A botanical-based environmentally friendly, corrosion preventative that is both bio-degradable and chemically neutral.

Solvent-Based

METCOR 47

A solvent-based corrosion preventative ideal for all types of finished parts and can be used for overseas shipment due to the salt spray protection.

METCOR 57

A solvent-based corrosion preventative for long-term indoor protection of ferrous and non-ferrous metals.

METCOR 746

An indoor, dry-to-the-touch, vanishing corrosion preventative.

Oil Based

METCOR 55-A

A long-term, indoor corrosion preventative with lubricating and water displacing properties.

METCOR 908

A light mineral oil based corrosion preventative for up to 18 months indoor storage.

Water Based

METCOR 52 (Green)

An oil-free, biodegradeable indoor corrosion preventative for all metals.

METCOR 66

An oil-free, water based corrosion preventative for in-process rust protection on steels and cast irons.

Maintenance Fluids

HYDRAULIC FLUIDS

Premium ISO grade anti-wear, rust and oxidation-inhibited hydraulic oils blended from high quality paraffinic base stock. Available in ISO 32 through ISO 220 grades.

WAY LUBRICANTS

Fortified with a blend of refined lubricating oils and anti-wear additives specifically designed to provide maximum lubricity and long service life. Available in ISO 32 through ISO 220 grades.

GEAR OILS

A blend of refined lubricating oils, rust and oxidation inhibitors and extreme pressure additives. Available in various ISO grades as required.

AIRLINE LUBRICANTS

Exceptionally clean, low viscosity oils designed to lubricate and protect a variety of pneumatic and hand tools.

MET SPINDLE LUBRICANTS

High quality spindle bearing oils developed for the lubrication of high-speed spindle bearings in machine tools. Available in various ISO grades as required.

MET CHAIN & CABLE LUBRICANT

A moly base lubricant that penetrates the pin linkage in the roller chain. Non-sticky, tacky, and doesn't attract dust or sand particles.

METCOAT 10

A moly base heavy duty, penetrating, dry film lubricant for high-temperature chain and cable use. Heat resistant.

Equipment Refractometer Titration Kits

MEDIA AND CLEANER PRODUCTS

PLASTIC AND SYNTHETIC

(LCP) POLISH/LIGHT DEBURR

Is formulated to provide polishing, or a light Deburr when paired with the correct cleaners. The finish from LCP is polish/light matte. LCP compound has excellent wear and has a weight of 85-90 lbs./cubic foot.

PREPLATE V

Is a lightweight media that produces a very smooth finish. The V composition has an excellent preplate finish and has exceptional wear characteristics with a weight of 65-70 lbs./cubic foot.

GENERAL PURPOSE X

Is used in most standard applications and is great with metal removal while having a minimum of media loss. The X formulation has a smooth finish and a good media wear rate. The X formulation has a weight of 65-70 lbs./cubic foot.

GENERAL PURPOSE XV

The XV formulation can be used in most standard applications and leaves excellent finishes ready for anodizing or painting. The XV formulation has a smooth finish and has a good media wear rate. XV has a weight of 65-70lbs./cubic foot.

FAST CUT XV1

The XV1 formulation is a fast-cutting media for metal removal with minimum media loss. XV1 produces a matte finish with a good media wear rate. XV1 has a weight of 65-70lbs./cubic foot.

FAST CUT Z1

The Z1 formulation is a heavy zircon molded media which can be used as a general purpose, fast cutting media with good wear designed to produce excellent finishes with reduced cycle times. Z1 leaves a smooth surface finish and has a weight of 90-95lbs./cubic foot.

CERAMIC MEDIA

LIGHT CUT (LC)

Ceramic media for use in light finishing with exceptional wear characteristics. LC leaves a bright finish when paired with a complimenting cleaner/compound. (LC) had a weight of 85-90 lbs./cubic foot.

GENERAL PURPOSE (M)

(M) composition is a general ceramic media carrying good characteristics across the board. (M) composition is a good metal removal and has an exceptional wear rate. (M) composition can be used in a wide variety of finishing processes including deburr, de-flash, and radius applications. (M) composition has a weight of 85-90lbs./cubic foot.

FAST CUTTING (FC)

(FC) composition combines fast cutting and good wear. (FC) provides a good finish and a tough long-wearing bond. (FC) has a weight of 85-90 lbs./cubic foot.

COBB MEDIA

GF-2 1/2-14

Low cut with very high color. Good for centrifugal barrels, centrifugal disk, tumbling and vibratory applications, works well on gold, copper, aluminum and SS parts that are already polished.

GF-2 1/2-20

Same as 14 but a finer finish.

GF-2 1/2-30

Same as 20 but with a very fine finish. Good for jewelry and orthodontic applications.

RF-6-14

High cut with close to color buff. For use in all types of equipment. Great for stainless steel and silver.

RF-6 -14V

Designed for Vibratory Finishing Applications. Has less rouge, binder and less coating than 6-14 with a little more cut. Great for brass in the reloading industry.

RF-6-30

Same as RF-6-14 but with a very fine finish.

RF-7-14

Higher cut and retains high color. Good for spin finish equipment and aluminum cut down.

RF-7-30

Same as RF-7-14 but with a very fine finish.

RF-7 3/8

New concept. Same as the RF-7-14 but with some larger cob added.

SP-4-14

Highest cut with satin color. Good for spin-finish equipment and centrifugal. Works great on aluminum.



MEDIA AND CLEANER PRODUCTS

CLEANING COMPOUNDS

Aqua 2000

A multi-use blend of surfactants that can be applied to an almost infinite number of uses. Its unique cleaning ability produces clean surfaces by emulsifying grease and oils, buffing compounds, oxidation, solder flux, and tarnish. **Aqua 2000** is designed to be used in mass finishing equipment for a high detergency cleaning/burnishing compound.

CLC-500

All-purpose high color compound for all metals. **CLC-500** is a concentrated mild alkaline vibratory and tumble finishing compound. This product can be used for cleaning and burnishing metal parts in machinery intended for mass finishing. This compound is ideal for tumbling applications as well as vibratory and centrifugal machines.

CLC 580

A compound designed for use in vibratory finishing applications using most medias that are available on the market, for cleaning and degreasing metal parts and leaving a very clean surface ready for the next operation. **CLC-580** is also designed for use in all areas of manufacturing or maintenance where a clean surface is desirable.

RUST PREVENTATIVE

METCOR 43

Is ideal for all types of finished parts that imparts a nondrying film that is extremely effective at preventing corrosion. It offers excellent water displacing characteristics that allow it to rapidly separate from metal surfaces after machining operations or alkaline cleaners. This product is ideal for all types of finished parts and can be used for overseas shipment due to the salt spray protection.

METCOR 66

An oil-free, water-based corrosion preventative for in-process rust protection on steels and cast irons. **METCOR 66** deposits a dry, mono-molecular film on metal surfaces. This protective film is clear and provides excellent short-term, indoor corrosion protection.

METCOR 7465

A low odor, solvent-based corrosion inhibitor developed primarily for indoor protection for parts in process. It has good water displacing characteristics and rapidly separates from metal surfaces after machining operations or alkaline cleaning. It dries quickly to provide a thin, ultra-protective transparent film that is practically invisible.

BURNISHING COMPOUNDS

BC-300

Low active concentrate, steel ball burnishing compound, good for zinc and aluminum.

BC-300 X

A mild acidic tumble & vibratory burnishing compound, good with steel media.

BC-302

Low active concentrate, steel ball burnishing compound, modified for copper and aluminum.

BC-330-A

A compound designed for use in vibratory finishing applications using hardened steel, hard ceramic or porcelain burnishing media. **BC-330A** works well on all metals except magnesium. This compound has been designed for use on brass or aluminum, or when there is light oxidation to remove, it will produce chrome like finishes with steel media. **BC-330A** has a corrosion inhibitor built in to the product to protect the parts as well as the media during process.

BC-352

All purpose biodegradable compound. This product can be used for cleaning and burnishing metal parts in machinery intended for mass finishing. This compound is ideal for tumbling applications as well as vibratory and centrifugal machines.

BC-352-MC

Designed for use on corrosion prone ferrous metals. **BC-352-MC** is a low foaming, rust preventive burnishing compound. This formulation is for use in vibratory equipment, for ceramic, steel media burnishing or in any other vibratory operation where rust is a problem. This compound is ideal for tumbling applications as well as vibratory and centrifugal machines.



EQUIPMENT PROUDUCTS



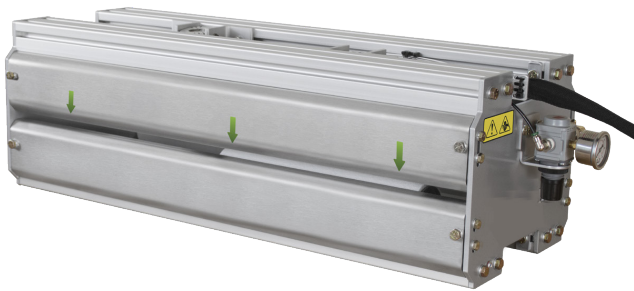
BURR-BENCH VIBRATORY SYSTEM

SUMP RECYCLING EQUIPMENT



MQL SPRAY SYSTEM
-TUBE BENDING
-MACHINING
-METAL STAMPING

EQUIPMENT PROUDUCTS



MQL ROLLER UNIT

HYDROBLEND 6200 PROPORTIONER

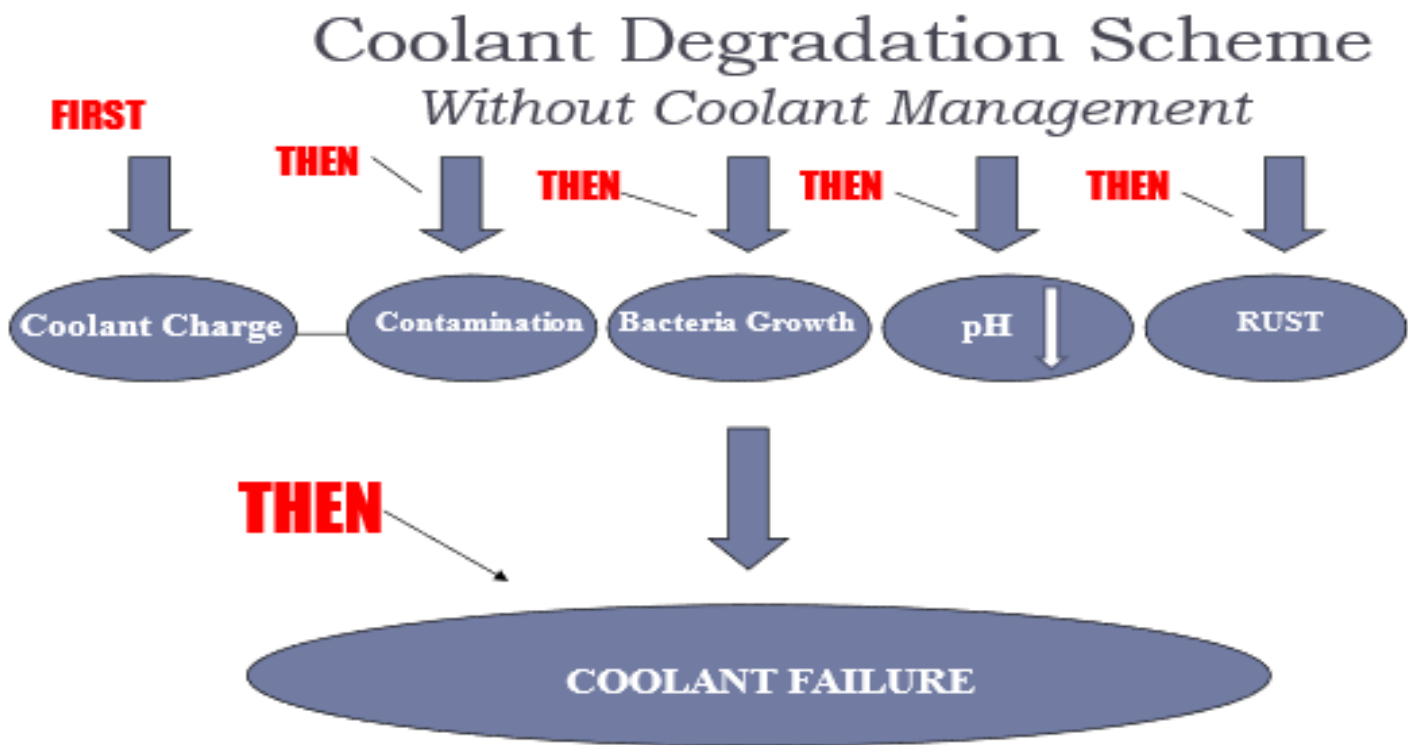


**REFRACTOMETER
-CONCENTRATION CONTROL**

COOLANT RECYCLING PROGRAM

Our coolant recycling program is a segment of our coolant management program. Our recycling program is for our customers who want to extend the sump life of the coolants keeping them running for years. Disposing coolants is not only the per gallon cost of disposing of them but also the cradle to grave responsibility.

We can usually go on top of your current supplier however; our lab can determine the compatibility of them. The recycling units will remove chips, sludge, grinding swarf, fines and other solids. The graph shows the importance of coolant management. Ask our technical representative about coolant management and recycling program.



SMALL PACKAGING FOOD SERVICE PRODUCTS



GERMICIDAL CLEANER

It is a foaming cleaner and disinfectant. This water-based foaming aerosol combines butyl cleaners, surfactants, and emulsifiers with a quaternary germicide to provide heavy-duty cleaning of all surfaces. It is safe for all bathroom surfaces and will not harm chrome or metal surfaces. It kills *Staphylococcus aureus*, *Pseudomonas aeruginosa*, *Salmonella enterica*, and *Herpes simplex* types 1 and 2 and controls mold, mildew, and fungus.

Size: 20 oz can **Net Weight:** 18 oz **Units/Pack:** 12 cans



METCOR 71

A USDA Certified BioBased Product. It is a botanical-based, environmentally friendly, corrosion preventative. This product is formulated with bio-renewable and bio-sustainable resources and is both bio-degradable and chemically neutral. METCOR 71 will protect all metal surfaces from moisture, high humidity and salt spray vapors. METCOR 71 contains no petroleum oil or hazardous materials. This product is approved by NSF International for use in and around food processing areas. NSF Registration #163308.

Size: 20 oz can **Net Weight:** 19 oz **Units/Pack:** 12 cans



ACCROLUBE GREASE FG

Accrolube Food Grade grease is a premium, high performance aluminum complex grease formulated with synthetic base oil for various applications in the food industry. It is a multi-service, non-melting, waterproof grease fortified with PTFE. It is designed specifically to lubricate, seal out water, and resist chemical attack under the most demanding conditions. AccroLube Food Grade, with its excellent film strength and extreme pressure qualities, forms a tough durable film of lubrication that prevents metal-to-metal contact. Accrolube Food Grade grease is H1 approved and can be used in food processing environments where there is a possibility of incidental food contact.

Size: 5cc, 1.5 oz, 14 oz, 1 lb, 5 lb, 7 lbs, 35 lb, Drum, 120 lb Keg



SMALL PACKAGING FIREARMS AND SPORTS PRODUCTS



GREEN GUN OIL



"Green Chemistry" with natural ingredients to lubricate, clean, condition, and protect metal surfaces on firearms and other metal sports equipment. "Green Chemistry" with natural ingredients to lubricate, clean, condition, and protect metal surfaces on firearms and other metal sports equipment.

Size: 2 oz can Units/Pack: 12 cans



GUN BORE CLEANER

Instant drying lubricant that cleans, lubricates and protects the firearm's bore and any other metal surface it contacts.

Size: 2 oz can Units/Pack: 12 cans



BORE SHIELD



Designed to protect the firearms of today's water fowler and hunting enthusiast. The protective film it deposits on your firearm is odorless and resists wind, rain, and snow conditions. Formulated with natural ingredients to compliment the duck or upland game hunter's surroundings, it leaves no fingerprint on the precious environment.

Size: 2 oz can Units/Pack: 12 cans



GREEN STOCK OIL



Natural and biodegradable lubricant that will clean, seal and restore the luster of wood surfaces.

(Not intended for sealed wood surfaces such as varnished and laquered woods.)

Size: 2 oz can Units/Pack: 12 cans



GREEN LEATHER OIL



Natural and biodegradable lubricant that will recondition old leather to reduce cracking, fading, and improve texture. It keeps leather looking new by adding water repellent, mildew protection, and suppleness in one application.

(Not intended for faux leather products)

Size: 2 oz can Units/Pack: 12 cans



ADVANCE BOTANICAL HAND CLEANER



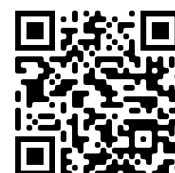
Heavy-duty, water dilutable detergent for hand washing.

Size: 2 oz can Units/Pack: 12 cans

Interested in **private labeling** ? Ask to find out more.



SCAN TO LEARN MORE



One Source...One Solution... One World.



Metalloid Corporation - World Headquarters 1160 White Street Sturgis, MI 49091 Metalloid Texas, Jacksonville, Texas

Connect with Metalloid Corporation



www.metalloidone.com



UNLOCK YOUR PEAK PERFORMANCE WITH METALLOID1

WWW.METALLOIDONE.COM